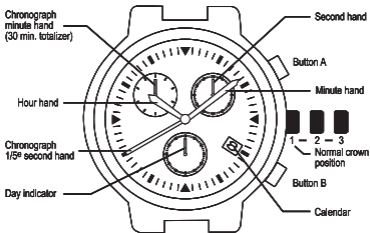


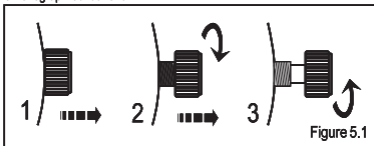
Chronograph Caliber 8162



Operating Instructions

A. To set the time (See Figure 5.1)

1. Pull crown gently out to position 3.
2. Turn crown clockwise to set the hands to desired time.
3. Push crown back to position 1.



B. To set the date (See Figure 5.1)

1. Pull crown gently to position 2.
2. Turn crown counter clockwise until desired date appears in calendar window.
3. Push crown back to position 1.

C. To set the day (See Figure 5.1)

1. Pull crown gently out to position 3.
2. Turn crown clockwise to set the hands to desired day.
3. Push crown back in to position 1.

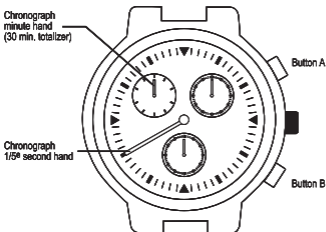
Note:

If the date is set between hours of around 9:00 PM and 1:00 AM, the date may not change on the following day.

If it is necessary to set the date during that time period, first change the time to any time outside it, set the date then reset the correct time.

D. Using the Chronograph

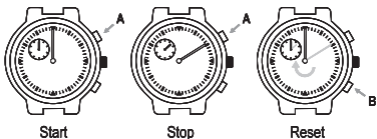
This Chronograph is able to measure and display time in 1/1 second united up to maximum of 1 hour.



E. Measuring time with the Chronograph

1. The Chronograph can be started and stopped each time button "A" is pressed.
2. To reset, press button "B" and the chronograph second and minute hands return to their 0 positions.

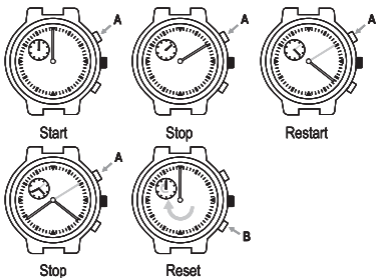
Chronograph Caliber 8162



Note:

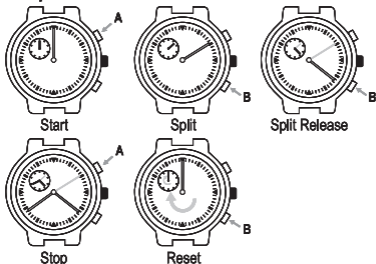
After 5 1/2 hour of continuous running, the chrono stops and resets automatically to save battery.

F. Accumulated elapsed time measurement

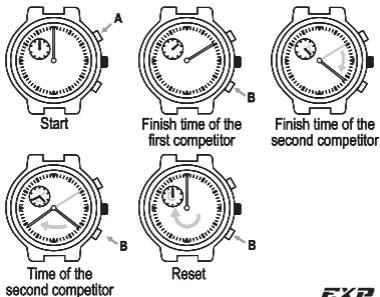


EXP
EXPEDITION

G. Split time measurement



H. Measurement of two competitors



I. Chronograph Reset (Incl. After Replacing -Battery)

This procedure should be performed when the chronograph second hand does not return to the 0 second position after the chronograph has been reset. Including after the battery has been replaced.



To reset the Chronograph

1. Pull crown gently to position 3.
2. Press button "A" to set the chronograph second hand to the 0 position.
3. The chronograph hands can be advanced rapidly by continuously pressing button "A".
4. Once the hands have been zeroed, reset the time and return the crown to its normal position.